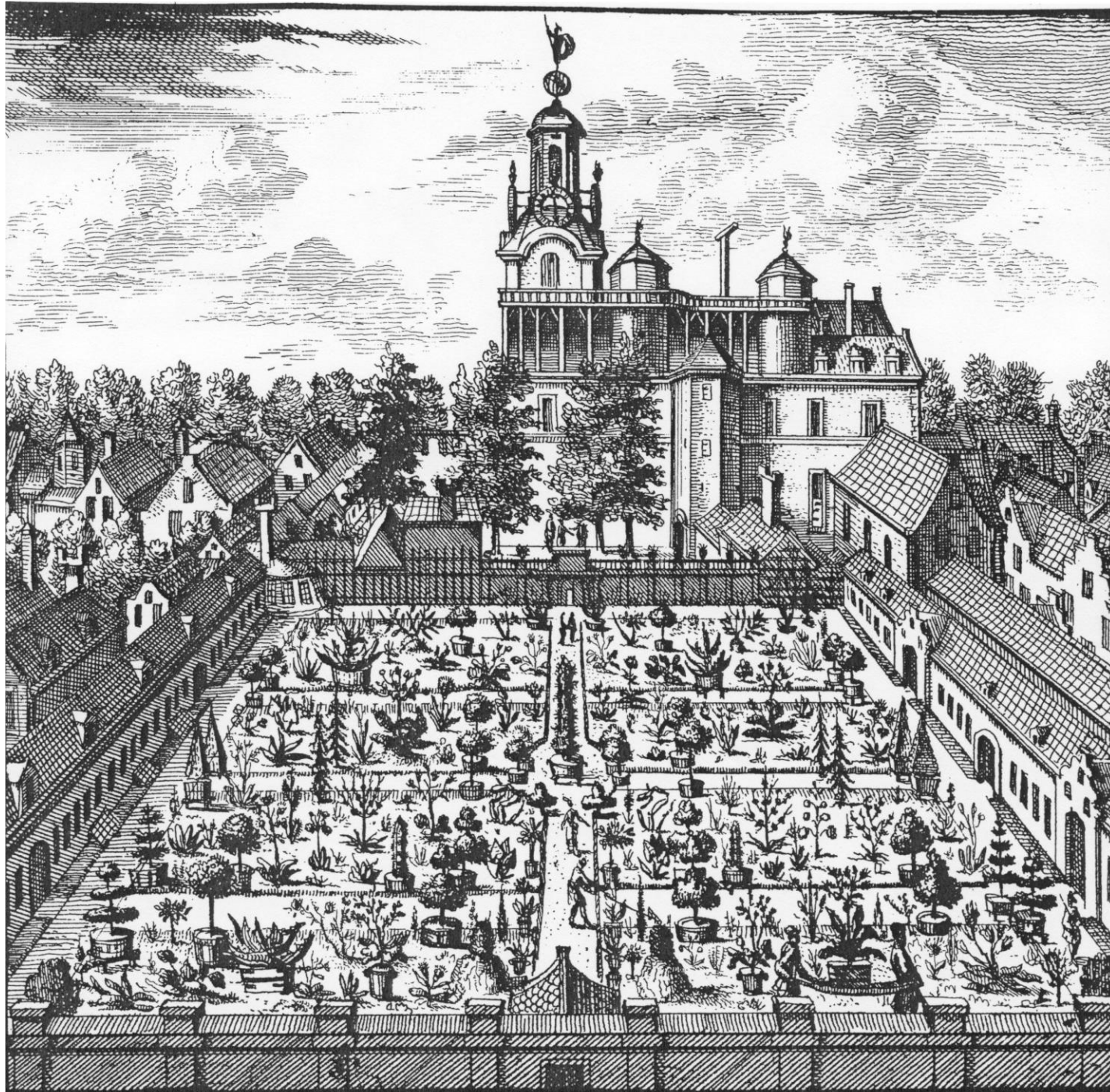


Hortus
botanicus

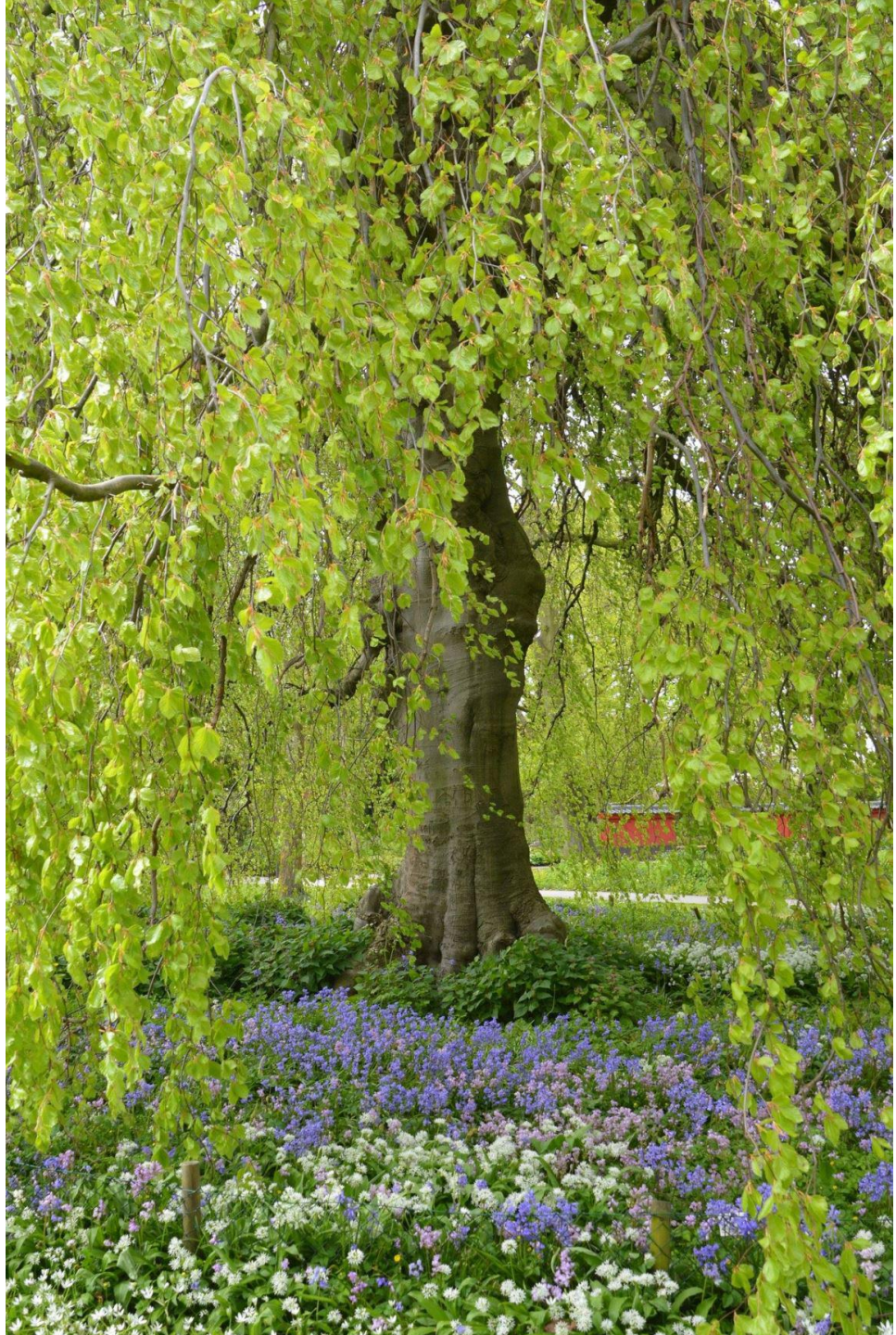
LEIDEN

Stadsb(i)omen van de toekomst

prof. dr. Barbara Gravendeel
@NDV/KVBC Boskoop 18 juni 2026

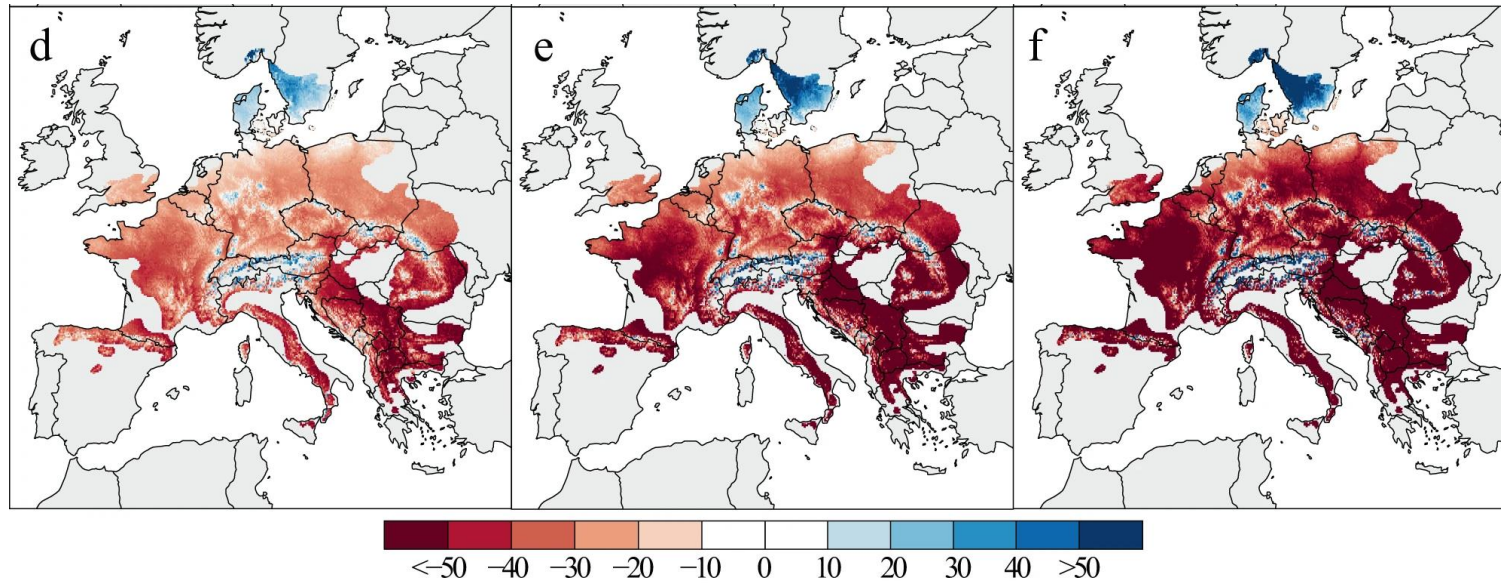


Le Jardin de l'Académie tel qu'il est à présent





Beuk *Fagus sylvatica*



Beuk *Fagus sylvatica*





Klimaatverandering

Verziltting

Hitte

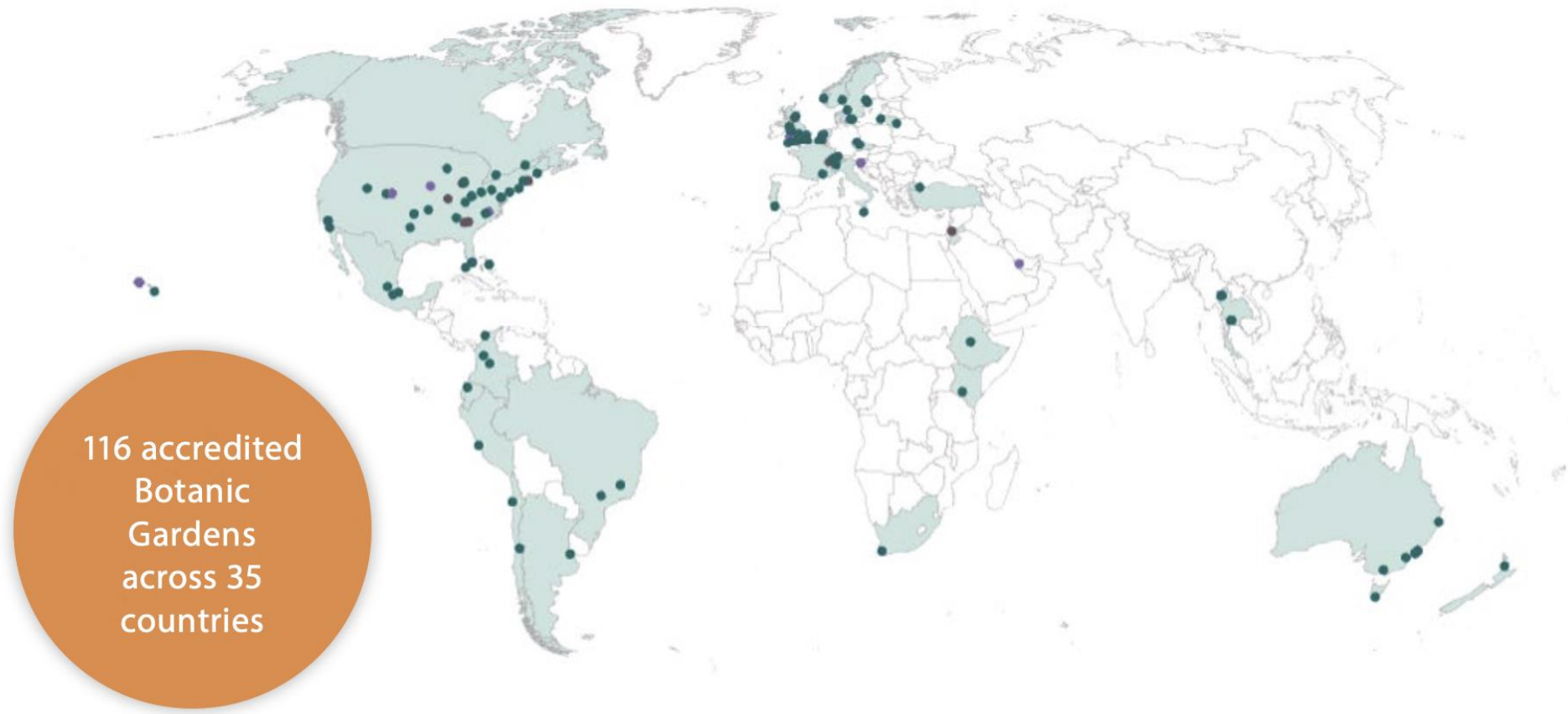
Droogte

Inundatie

CSI Trees



Botanic Gardens Conservation International



116 accredited
Botanic
Gardens
across 35
countries



Specify the climate change scenario

Current
2020

Emissions Limited
SSP2
RCP4.5 by 2050

Business as Usual
SSP3
RCP7.0 by 2090

Assessment Results

for taxon **Quercus ilex L.**

at garden **Hortus botanicus Leiden (Netherlands)**

with climate change scenario

Business as Usual in 2090 (SSP3)

| Source | Records | MAT | Temperature in Celsius | | | | | | | | | | | | | | | | | Updated At | Hottest Month | Coldest Quarter | Annual Precipitation | Driest Quarter |
|---------------------|---------|---------|------------------------|----|----|----|----|-----|-----|-----|-----|-----|-----|-----|-----|-----|-----|-----|------------|------------|---------------|-----------------|----------------------|----------------|
| | | | 5° | 6° | 7° | 8° | 9° | 10° | 11° | 12° | 13° | 14° | 15° | 16° | 17° | 18° | 19° | 20° | 21° | | | | | |
| GBIF BGCI | 34333 | 13 °C | 0 | 0 | 0 | 1 | 1 | 1 | 2 | 3 | 3 | 3 | 2 | 1 | 1 | 0 | 0 | 0 | 0 | 2019-06-13 | 27.8 °C | 5.9 °C | 762 mm/year | 124 mm/qtr |
| GBIF Current | 31233 | 13 °C | 0 | 0 | 0 | 0 | 1 | 2 | 2 | 3 | 3 | 3 | 2 | 1 | 1 | 1 | 0 | 0 | 0 | 2020-10-09 | 27.4 °C | 6.2 °C | 756 mm/year | 125 mm/qtr |
| Model | 0 | 13 °C | 0 | 0 | 1 | 1 | 1 | 2 | 3 | 3 | 3 | 3 | 2 | 1 | 1 | 1 | 0 | 0 | 2021-06-18 | | | 0 | 0 | |
| PlantSearch | 183 | 10.9 °C | 1 | 1 | 1 | 1 | 2 | 3 | 3 | 3 | 3 | 3 | 2 | 2 | 1 | 1 | 1 | 1 | 2025-09-11 | 24.7 °C | 4.4 °C | 783 mm/year | 143 mm/qtr | |
| UrbanPlants | 31 | 15 °C | 0 | 0 | 0 | 0 | 0 | 1 | 1 | 2 | 2 | 3 | 3 | 3 | 3 | 3 | 1 | 1 | 0 | 2020-06-30 | 27 °C | 10.2 °C | 665 mm/year | 122 mm/qtr |

Projected climate details at garden based on selected climate scenario:

Mean Annual Temperature (BIO1): **12.9 °C**

Maximum temperature of the hottest month (BIO5): **25.7 °C**

Minimum temperature of the coldest quarter (BIO11): **6.5 °C**

Annual precipitation (BIO12): **887 mm/year**

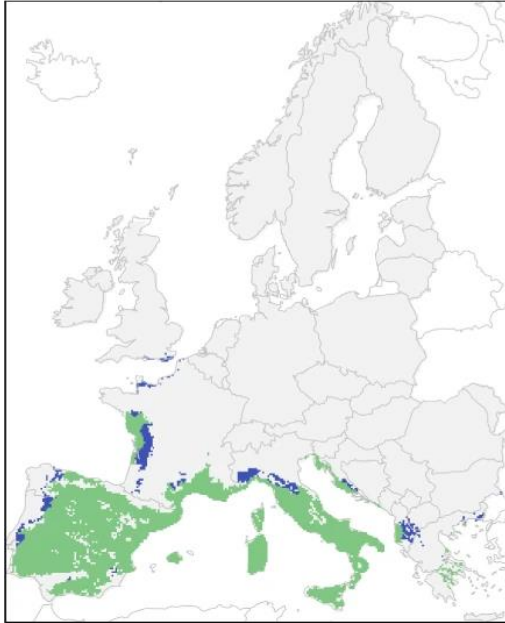
Precipitation of the driest quarter (BIO17): **166 mm/qtr**

Risk Codes

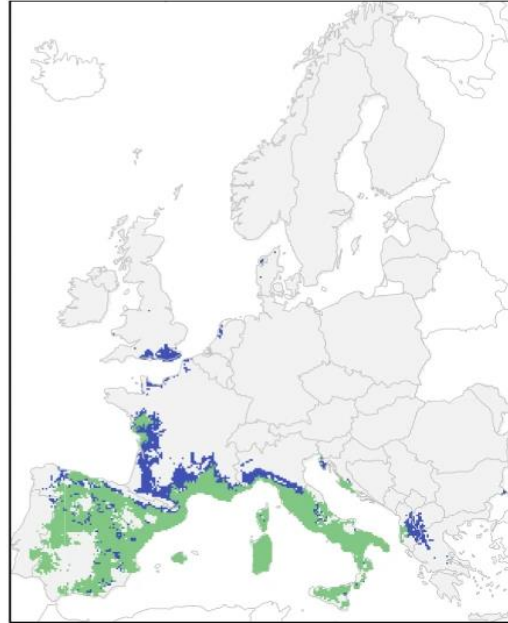
- 0** Species not known to occur at this temperature
- 1** At the edge of the known temperature for the species
- 2** Species known to occur at this temperature
- 3** Species mostly occurs at this temperature

Steeneik *Quercus ilex*

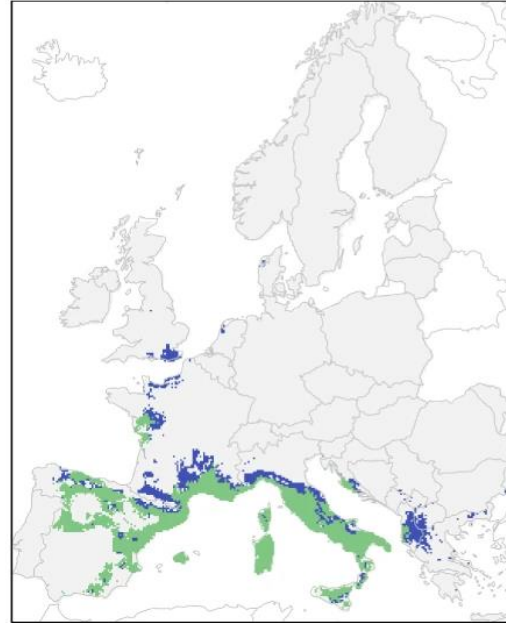
2025



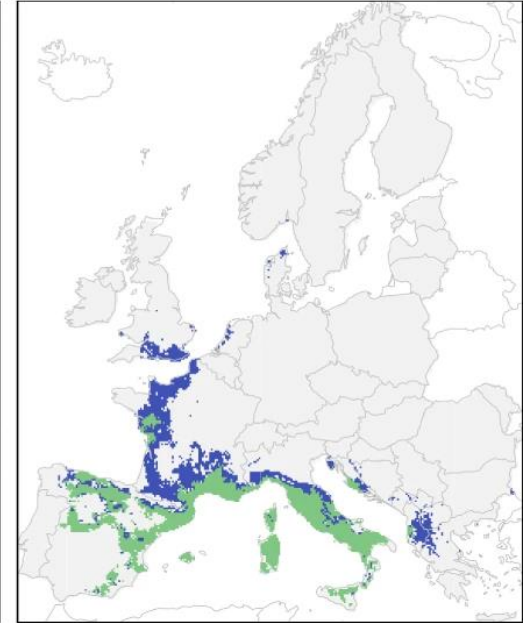
2035



2065



2095







turne
Fagales - Faga
Quercus x turneri
Q. ilex x Q. robur
HBL20260030/1

Begeleide migratie



Japanese mahonia *Berberis japonica*



Steeneikenbos in Spanje



Schijniep *Zelkova serrata*



Schijniep *Zelkova serrata*



Schijniepenbos op Kreta



The background features a detailed botanical illustration in a light green color against a darker green background. On the left, there is a large, detailed leaf with prominent veins. On the right, there is a large, multi-petaled flower or seed pod, also with detailed line work. The overall style is that of a scientific botanical drawing.

hortusleiden.nl/en/



Hortus botanicus Leiden is onderdeel van Universiteit Leiden